

EASY COMPANY:

ENGLAND TO THE EAGLE'S NEST

Aldbourne • Portsmouth • Normandy • Eindhoven • Nijmegen
Bastogne • Clervaux • Luxembourg City • Haguenau
Dachau • Berchtesgaden • Zell am See



THE NATIONAL
WWII MUSEUM
NEW ORLEANS



Expert battlefield guide Joris Nieuwint recounts the actions of Smokey Gordon near his foxhole dug in the Bois Jacques near Bastogne, Belgium, during the Battle of the Bulge. *Band of Brothers* actors Frank John Hughes, Ross McCall, and James Madio listen nearby.

© Kimberly M. Wang | @eardogfoto | eardog.com



Stephen J. Watson

Dear Friend of the Museum,

In 1980, my predecessor Nick Mueller persuaded his best friend and University of New Orleans colleague Stephen Ambrose to lead their first overseas tour—a trip from the Normandy D-Day beaches to the Rhine River. For the next 20 years, the duo continued to run tours while Ambrose began collecting hundreds of oral histories from D-Day veterans, including interviews with surviving members of the famed Easy Company.

Of course, the rest is history. Ambrose's research and interviews led to best-selling books and the HBO miniseries *Band of Brothers*. Ambrose and Mueller's passion for preserving the stories of D-Day veterans led to the idea of building a National D-Day Museum in New Orleans. And their overseas tours tracing the wartime route of the "Band of Brothers" helped raise funds for the Museum, which would open in 2000 and quickly expand its mission to include the entire war effort.

Today, the Easy Company tour remains one of our most popular travel programs and features many of those Easy Company interviews conducted by Ambrose and his team at the Eisenhower Center for American Studies. While our travel program has expanded significantly, this journey remains core to our mission—offering rare access to sites, extraordinary guides, and quaint regional accommodations. As the authority on World War II, the Museum draws upon its collection of oral histories, photographs, and artifacts to deliver the most memorable, emotional, educational, and extraordinary travel experiences.

I hope you'll join us on this personal journey to the beaches, bridges, cities, and villages where the legendary Easy Company fought the crucial D-Day battles and changed the course of history. Every tour features an original cast member from the miniseries, making our tour a truly unique experience.

Sincerely,

Stephen J. Watson
President & CEO, The National WWII Museum

THE NATIONAL WWII MUSEUM

EDUCATIONAL TRAVEL PROGRAM

5 MUSEUM QUICK FACTS

10 million+
visitors since the Museum
opened on June 6, 2000

\$2 billion+
in economic impact

150,000+
active Museum members

8,000+
travelers, representing
every US state

625,000+
social media followers



TRAVEL WITH EXPERTS

26
top historians with

174
published books and

47
documentary credits



TRAVEL TO **27** COUNTRIES
COVERING ALL THEATERS
OF WORLD WAR II



30
TOUR PROGRAMS
operated on average per year,
AT TIMES ACCOMPANIED BY
WWII VETERANS AND
HOLOCAUST SURVIVORS



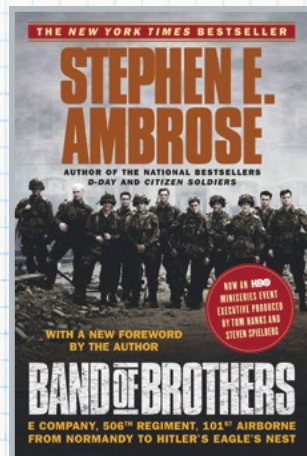
VISIT **16**
OVERSEAS AMERICAN BATTLE
MONUMENTS COMMISSION
CEMETERIES & MEMORIALS PLUS

189
MUSEUMS ON OUR ITINERARIES



From Our Collection

Personal and professional friendships brought together the stories of the members of Easy Company at The National WWII Museum in our oral history collection and our exhibits. **Easy Company: England to the Eagle's Nest** is the only tour featuring many archival and research pieces pertaining to the **Band of Brothers**.



STEPHEN AMBROSE'S IBM® SELECTRICS ELECTRIC TYPEWRITER

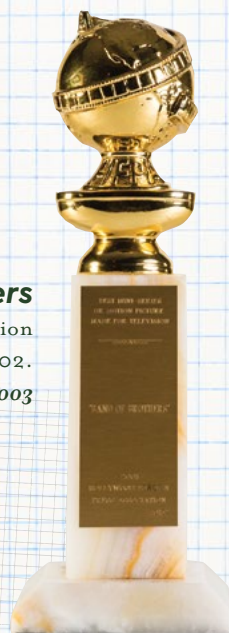
Dr. Ambrose used this typewriter while he was a professor at the University of New Orleans. Many of his books were written on this typewriter.

Stephen and Moira Ambrose Collection, 2006.030

GOLDEN GLOBE AWARD - *Band of Brothers*

This award was bestowed by the Hollywood Foreign Press Association for best miniseries or made-for-television film in 2002.

Stephen and Moira Ambrose Collection, 2006.003



EMMY AWARD - *Band of Brothers*

The Academy of Television Arts and Sciences presented Stephen Ambrose this award for outstanding miniseries. Ambrose was co-executive producer for the adaptation of his book into the 10-part HBO miniseries that premiered in 2001.

Stephen and Moira Ambrose Collection, 2006.030

Featured Guests

Travel in the company of original
cast members from award-winning
HBO miniseries*

*One cast member joins each departure.

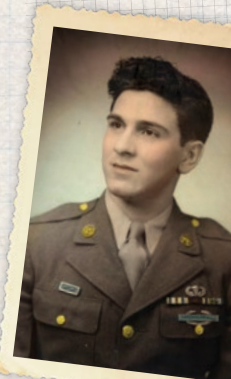
BAND OF BROTHERS



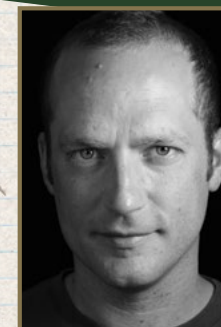
Robin Laing
Pvt. Edward "Babe" Heffron



James Madio
Sgt. Frank Perconte



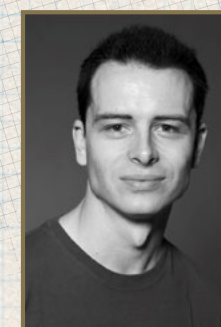
Rick Warden
1st Lt. Harry F. Welsh



Frank John Hughes
SSG William J. "Wild Bill"
Guarnere Sr.



Ross McCall
Sgt. Joseph David
"Joe" Liebgott



Shane Taylor
T/4 Eugene G. "Doc" Roe Sr.





EASY COMPANY: ENGLAND TO THE EAGLE'S NEST

13 DAYS ACROSS 7 COUNTRIES

Aldbourne • Portsmouth • Normandy • Eindhoven • Nijmegen • Bastogne • Clervaux
Luxembourg City • Haguenau • Dachau • Berchtesgaden • Zell am See



MULTIPLE DEPARTURES AVAILABLE

Visit ww2museumtours.org, or scan the QR code, for a comprehensive listing of all tour offerings and early booking discount opportunities.

PROGRAM INCLUSIONS

- Travel in the company of a cast member from the HBO miniseries *Band of Brothers* (Actor will be announced to travelers prior to departure)
- Full-time logistical tour manager
- Expert local battlefield guides
- Roundtrip airport transfers (when arriving and departing on scheduled group tour dates)
- Boutique hotel accommodations in prime locations
- Private, first-class, air-conditioned motor coach transportation
- VIP access to sites not offered on other tours
- Entrance fees to all sites, museums, and historic attractions in itinerary
- Personal listening devices on all included touring
- Gratuities to guides, drivers, porters, and servers
- 12 breakfasts, 7 lunches, 1 reception, and 8 dinners
- Beer, wine, and soft drinks with included lunches and dinners
- Informative map book with useful battlefield maps and archival images to be used throughout the journey
- Personalized luggage tags and name badge

MEMO FROM THE OFFICE OF THE REGIMENTAL COMMANDER



**HEADQUARTERS
506th PARACHUTE INFANTRY
OFFICE OF THE REGIMENTAL COMMANDER**

Fort Benning, Georgia,
December 18, 1942.

**MEMORANDUM TO SOLDIERS OF THE
506th PARACHUTE INFANTRY:**

You have now become qualified parachutists and wear the wings of the Parachute soldier.

You are a member of one of the finest regiments in the United States Army and, consequently, in the world.

You are about to go on furlough, into the homes of relatives or of friends.

I feel that I should remind you of certain things that are expected of you—not only while on furlough, but also a creed by which you are expected to govern your life and your actions:

1. You must keep in mind that first you are a soldier in the Army of the United States; that you are a parachutist, the elite of this army, and finally that you are a member of the 506th Parachute Infantry.

2. You must walk with pride and with military bearing.

3. You must be careful of your personal appearance, keeping your uniform neat at all times.

4. You must do nothing to bring discredit upon the Army, Parachute Troops or this Regiment.

5. Remember our battle-cry and motto, "CURAHEE", and its meaning: "Standing Alone". *We Stand Alone Together.*

The Regimental Commander desires that you convey to the members of your family his personal greetings.

Rt Sink
R. F. SINK.
Colonel, 506th Parachute Infantry,
Commanding.

26185—BENNING, GA., 12-18-42—2,500

EISENHOWER'S COMMAND FOR D-DAY



GENERAL DWIGHT D. EISENHOWER TALKING WITH AMERICAN PARATROOPERS OF THE 101ST AIRBORNE DIVISION ON THE EVENING OF JUNE 5, 1944, AS THEY PREPARED FOR THE INVASION OF NORMANDY / NARA.

As the Supreme Commander of the Allies, it was up to General Dwight D. "Ike" Eisenhower to make the final decision to launch the invasion of Normandy on June 5, 1944. Due to less-than-favorable weather reports, there was serious concern among many within the Allied high command that casualties would be extremely high, especially among the airborne forces. British Air Marshal Sir Trafford Leigh-Mallory feared that the casualty rate for these elite troops could be as high as 75 percent.

Ike made the decision to postpone the landings by one day, pushing D-Day back to June 6, 1944. As he gathered his team the next night for a final war council, he polled his commanders again, and again Leigh-Mallory stressed his concern of the weather conditions and the well-being of the airborne forces. Despite these warnings, Eisenhower knew the invasion couldn't be postponed indefinitely, so he made the tough decision with the words, "OK, let's go."

Upon making this historic decision, Ike made a point to go to the airfields of one unit of the 101st Airborne Division to see the men off on this perilous mission. He wanted to meet these men, many of whom he feared wouldn't survive into the next morning, face-to-face to boost their confidence, as well as his own.

DAY 1: LONDON ARRIVALS / ALDBOURNE, ENGLAND

After individual arrivals into London Heathrow Airport (LHR), proceed west of London to the training areas of Easy Company. After lunch in Aldbourne, enjoy a walking tour with local villagers and members of the Aldbourne Historical Society, who recount what it was like to welcome Easy Company and other American troops more than 80 years ago. This evening, get to know your fellow travelers at a Welcome Reception and Dinner at the hotel.

Accommodations: *Donnington Valley Hotel & Spa (L, R, D)*



TAKING A PHOTO IN ALDBOURNE GREEN. PHOTO BY SUSANNAH FIELDS.



ALDBOURNE CHURCH SQUARE. PHOTO BY SUSANNAH FIELDS.

DAY 2: PORTSMOUTH / CROSS THE ENGLISH CHANNEL

After breakfast at the hotel, head south to Portsmouth. Serving as the launching point for Operation Overlord, Portsmouth is overflowing with history. Learn about the marshalling yards and the intense training and need for secrecy on your way to the port city. For lunch, enjoy classic English pub fare at the Golden Lion in the picturesque village of Southwick, renowned for the planning of the D-Day landings and the historic location where Eisenhower and Montgomery met. This afternoon, cross the English Channel by ferry with a dinner onboard, landing in Normandy late in the evening.

Accommodations: Hotel Le Lion d’Or (B, L, D)



CROSS-CHANNEL FERRY RIDE. PHOTO BY SUSANNAH FIELDS.

JAMES MADIO AND ROSS MCCALL AT THE GOLDEN LION PUB IN PORTSMOUTH. PHOTO BY SUSANNAH FIELDS.





ROSS MCCALL AND FRANK JOHN HUGHES POSE WITH A TOUR GUEST AT THE DICK WINTERS MEMORIAL.
PHOTO: © KIMBERLY M. WANG | @EARDOGFOTO | EARDOG.COM

DAY 3: UTAH BEACH / US AIRBORNE

After breakfast, depart for the Utah Beach area to tour the landing site and visit the Utah Beach Museum in Sainte-Marie-du-Mont. View an original B-26 bomber in the museum's hangar and listen to the oral history of Dick Winters on the second floor of this magnificent institution. Next, take an exclusive tour of Brécourt Manor, made famous by Easy Company's action here on June 6, 1944. In the small town of Sainte-Mère-Église, enjoy lunch independently then visit the Airborne Museum and the church made famous by the film *The Longest Day*. En route to the hotel, the coach makes a photo stop. Enjoy dinner with the group this evening.

Accommodations: Hotel Le Lion d'Or (B, D)



CHURCH AT SAINTE-MÈRE-ÉGLISE. PHOTO BY SUSANNAH FIELDS.

MAJOR DICK WINTERS

COMMANDER, 2ND BATTALION, 506TH PARACHUTE INFANTRY REGIMENT

1918 – 2011

Distinguished Service Cross, Bronze Star
with Oak Leaf Cluster, and Purple Heart

MAJOR DICK WINTERS AT SCHOONDERLOGT, HOLLAND.
COURTESY OF THE GETTYSBURG MUSEUM OF HISTORY.



THE TOUR GROUP POSING IN THE SAME LOCATION AS DICK WINTERS' FAMOUS PHOTO.

THROUGH THEIR EYES

Remembering Easy Company, 506th Parachute
Infantry Regiment of the 101st Airborne

Richard "Dick" Winters began his association with the 101st Airborne Division's 506th Parachute Infantry Regiment as a platoon leader in Easy Company. By war's end, he commanded the 506th's 2nd Battalion, which included his old company. Although the attrition of war played a part in Winters's rapid advance through the ranks, it was his superb leadership and ability to complete tough assignments that endeared him to the men under his command. The men of Easy Company who survived the war attribute their survival to many things, and the leadership of Dick Winters is always near the top of the list.

Easy Company: England to the Eagle Nest's visits sites that Winters and his men made legendary, including Brécourt Manor where they knocked out a battery of German 105-mm howitzers on D-Day; "The Crossroads" in the Netherlands where they took on a force many times their size; Foy, on the outskirts of Bastogne, where they endured hell from both the Germans and Mother Nature; the site of the "Last Patrol" in Haguenau; and finally, the Eagle's Nest near Berchtesgaden where the men of Easy Company enjoyed Hitler's famous mountain retreat at the end of the war.

DAY 4: LA FIÈRE / EASY COMPANY IN NORMANDY

Today, travel along rural lanes, past hedgerows, and over causeways to La Fièvre bridge, where elements of the 82nd Airborne fought off four days of attacks from German troops trying to retake this strategic bridge. Next, travel to Beuzeville-au-Plain to view the monument to Lieutenant Thomas Meehan's downed C-47, and hear his story. After an included lunch, learn the story of Easy Company at the important town of Carentan, which linked the Utah and Omaha Beach forces. End the day's touring at the Dead Man's Corner Museum and with a visit to the church at Angoville-au-Plain. This evening enjoy free time to enjoy one of Bayeux's many quaint cafés.

Accommodations: *Hotel Le Lion d'Or (B, L)*



TOP PHOTO: EXTERIOR OF DEAD MAN'S CORNER MUSEUM
BOTTOM PHOTO: A TRAVELER INSPECTS A DISPLAY IN THE DEAD MAN'S CORNER MUSEUM. PHOTOS COURTESY OF SUSANNAH FIELDS.



TOUR GUESTS VISITING THE AIRBORNE MUSEUM IN SAINTE-MÈRE-ÉGLISE

DAY 5: POINTE DU HOC / OMAHA BEACH / NORMANDY AMERICAN CEMETERY

On the final day in Normandy, touring is devoted to the ground troops who came ashore in the Omaha Beach area. First, visit Pointe du Hoc, where Army Rangers faced tough odds coming ashore and scaling the imposing 100-foot cliff. Next, visit Dog Green Sector of Omaha Beach. Company A of the 1st Battalion, 116th Infantry, 29th "Blue and Gray" Division, landed at H-Hour on D-Day. A 250-meter stretch of beach untouched by preliminary bombardments lay in front of them, and they could clearly see German bunkers in the distance. Within 15 minutes, Company A was reduced from an assault company to a small rescue party. These events inspired the opening scenes of *Saving Private Ryan*. After an included lunch overlooking Omaha Beach, spend the afternoon at the Normandy American Cemetery, where more than 9,000 Americans are laid to rest in the ground they helped liberate. Guests will be given time to walk the grounds, visit the small museum, and remember the sacrifices made here. Reflect on the day's touring during dinner with the group this evening.

Accommodations: *Hotel Le Lion d'Or (B, L, D)*



A TRAVELER LAYS A SINGLE WHITE LONG STEM ROSE AT THE GRAVE OF A FALLEN SERVICEMEMBER IN NORMANDY AMERICAN CEMETERY. PHOTO BY SUSANNAH FIELDS.

END OF DAY FLAG LOWERING CEREMONY AT NORMANDY AMERICAN CEMETERY. PHOTO BY SUSANNAH FIELDS.

DAY 6: NORMANDY TO THE NETHERLANDS

Bid farewell to Normandy and head to the Netherlands. Along the way, view episodes from the *Band of Brothers* miniseries. Stop in picturesque Amiens, France, a city along the Somme River. Enjoy lunch and independent exploration, with time to visit the Amiens Cathedrals, the tallest complete cathedral in France and a UNESCO World Heritage Site. Relax on the coach this afternoon. An included dinner at the hotel greets you upon arrival in Eindhoven.

Accommodations: *Hotel Pullman Eindhoven Cocagne (B, D)*



VIEW OF AMIENS DEWAILLY CLOCK AND THE CATHEDRAL OF OUR LADY OF AMIENS.

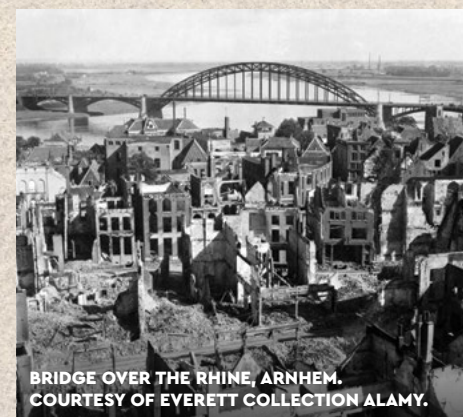


BRITISH FIELD MARSHAL SIR ALAN BROOKE, PRIME MINISTER WINSTON CHURCHILL, FIELD MARSHAL BERNARD MONTGOMERY, AND AMERICAN LIEUTENANT GENERAL WILLIAM H. SIMPSON CROSSING THE RHINE ON MARCH 26, 1945. COURTESY OF PICTORIAL PRESS LTD / ALAMY STOCK PHOTO.

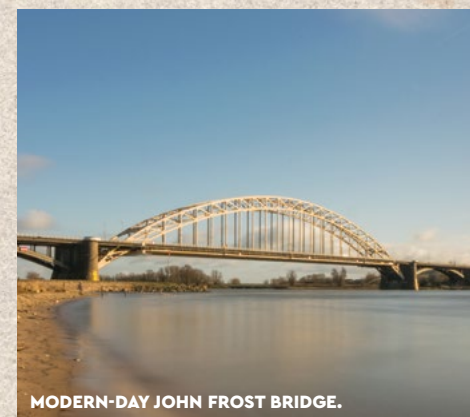
DAY 7: EINDHOVEN / ARNHEM / NIJMEGEN

In September 1944, the Allies launched Operation Market Garden, a daring airborne operation meant to secure crucial Rhine River crossings and advance into northern Germany. Although it ultimately failed to achieve its objectives, the determination and courage shown by the airborne troops and the units that assisted them made Market Garden one of World War II's most famous battles. During today's tour, visit the actual battle sites where Easy Company fought and learn how the 101st Airborne fit into Operation Market Garden at Nuenen, Zon Bridge, and Logtenburg. After lunch, visit Schoonderlogt Farm and then see where where Dick Winters led the attack at "The Crossroads," the subject of Episode 5 of *Band of Brothers*. Near Arnhem, members of the company helped rescue more than 100 British airborne troops who were stuck behind enemy lines across the Rhine during Operation Pegasus in October 1944. The touring day ends in Arnhem and "A Bridge Too Far" before returning to Eindhoven where guests enjoy an evening at leisure.

Accommodations: *Hotel Pullman Eindhoven Cocagne (B, L)*



BRIDGE OVER THE RHINE, ARNHEM. COURTESY OF EVERETT COLLECTION ALAMY.



MODERN-DAY JOHN FROST BRIDGE.



NETHERLANDS AMERICAN CEMETERY AND MEMORIAL, MARGRATEN, THE NETHERLANDS.
COURTESY OF RENÉ VAN DEN BERG / ALAMY STOCK PHOTO.



PHOTO: © KIMBERLY M. WANG
@EARDOGFOTO | EARDOG.COM

DAY 8: NETHERLANDS AMERICAN CEMETERY / JOURNEY TO THE ARDENNES

This morning, guests may choose to take a guided walking tour of Eindhoven, explore the area independently, or relax at the hotel. The optional morning tour includes details on the actions that occurred around Eindhoven, with visits to the Joe Mann Memorial and the Robert Cole Memorial. After lunch at leisure, visit the Netherlands American Cemetery in Margraten—the only American military cemetery in the Netherlands. A unique aspect of this cemetery is its connection with the Dutch people. Since 1945, members of the local community have adopted the grave sites of the American fallen. They bring flowers to the cemetery and research the life of the servicemember they adopt as a way to honor their sacrifice. After paying respects to members of Easy Company who are buried there, continue to the medieval market town of Clervaux, Luxembourg, in the heart of the Ardennes. Along the way, the tour guide presents an overview of the Battle of the Bulge—Hitler's last-ditch effort to defeat the Allies in the West, and the largest land battle fought by the US Army in World War II.

Accommodations: *Chateau d'Urspelt (B, D)*

DAY 9: BATTLE OF THE BULGE / BASTOGNE / BOIS JACQUES

This day is dedicated to the heroic defense of the besieged crossroads town of Bastogne as depicted in *Band of Brothers* Episode 6: "Bastogne." Today's visit also includes the Mardasson Memorial, a monument honoring the memory of the American soldiers wounded or killed during the Battle of the Bulge. Next, a visit to the Bastogne War Museum provides insight into the experiences of the troops during the harsh, cold winter of 1944-45. In the Bois Jacques guests may choose to climb in the foxholes that provided some shelter to Easy Company. Free time in Bastogne is also provided during the day for lunch—and perhaps some shopping for Belgian chocolates. The evening is at leisure.

Accommodations: *Chateau d'Urspelt (B)*



101ST AIRBORNE DISPLAY IN THE BASTOGNE WAR MUSEUM.



BAND OF BROTHERS actor Frank John Hughes, who portrayed Staff Sergeant William "Wild Bill" Guarnere in the HBO miniseries, kneels near a foxhole in the Bois Jacques where the men of Easy Company took shelter during the siege of Bastogne. Photo courtesy of Kimberly M. Wang | eardog.com | [@eardogfoto](https://www.instagram.com/eardogfoto).



LUXEMBOURG AMERICAN CEMETERY

DAY 10: LUXEMBOURG AMERICAN CEMETERY / HAGUENAU

Before departing the Ardennes, the final stop is at the Luxembourg American Cemetery and Memorial, where guests visit the graves of Easy Company members and of General George S. Patton. Continue to Haguenau for lunch and then see the "Last Patrol" of Easy Company, where they held fast against Operation Nordwind, the last major German offensive of the war in the West, for more than a month. Arrive in Stuttgart this evening and enjoy dinner and exploration on your own.

Accommodations: *Maritim Stuttgart (B, L)*

DAY 11: DACHAU / ZELL AM SEE

Located 10 miles northwest of Munich, the Dachau Concentration Camp was established in 1933 to hold political prisoners. Throughout the rest of the 1930s, the camp grew to hold Jews, Roma, Slavs, and more groups deemed unworthy by the Nazis. In 1943, as war raged across the continent, the Nazis constructed more than 150 subsidiary camps near Dachau where prisoners were often worked to death. The terrible conditions in the camp system led to a widespread typhus epidemic by the end of 1944, as the Allied armies were preparing to enter Germany. When the first American troops approached the camp in April 1945, the sight of the prisoners and the living conditions tested even the most battle-hardened soldiers. Episode 9 of the miniseries portrays Easy Company discovering one of Dachau's subsidiary camps at Landsberg. After discussing why World War II was fought, the group heads to the Bavarian Alps, as Easy Company did, for the final chapter of the journey.

Accommodations: *Grand Hotel Zell Am See (B, D)*



DACHAU CONCENTRATION CAMP MEMORIAL SITE.
PHOTO COURTESY OF KIMBERLY M. WANG | EARDOG.COM | @EARDOGFOTO.



TOUR GUESTS AT HITLER'S EAGLE'S NEST.

DAY 12: BERCHTESGADEN

On the final day of touring, guests take in the spectacular views from Hitler's Eagle's Nest*. Construction on the *Kehlsteinhaus*—or the Eagle's Nest in English—began in 1937 and was funded by Hitler's inner circle. Legend says that Mussolini gifted the fireplace to the project. Although a fortune was spent to build the perch, Hitler only made 14 official visits. Return to Zell Am See and reflect on the journey during a Farewell Dinner at the hotel, overlooking the lake featured in the final scenes of *Band of Brothers*.

Accommodations: *Grand Hotel Zell Am See (B, L, D)*

**Due to its unique location on top of a mountain at 6,017 feet accessible only by one steep and winding road, various factors contribute to our ability to visit the Eagle's Nest. In the event it is closed during any given tour, alternate touring in Berchtesgaden will be provided:*

Driving tour up the Obersalzberg / Visit former Berghof site / Guided tour of underground bunkers and documentation center / Bavarian lunch at Obersalzberg Golf Course / Farewell Dinner



EASY COMPANY AT EAGLES NEST, MAY 1945.

DAY 13: ZELL AM SEE / MUNICH

Early this morning the entire group transfers together to the Munich Airport (MUC) for individual flights home.* (B)

**Please note that flights should be scheduled to depart no earlier than 12:00 p.m. Weather and/or local government and venue conditions may change the final schedule. Each evening you will receive a detailed schedule for the following day, including the timing of meals and tours. If you have any questions or concerns, please contact the Travel Team.*

EXTEND YOUR JOURNEY!

CHURCHILL'S LONDON PRE-TOUR EXTENSION

\$2,399* per person double occupancy, \$2,999* single occupancy

**\$129 per person taxes & fees are additional.*

PROGRAM INCLUSIONS

- Three-nights at the 5-star Rubens at the Palace
- Transfer from London Heathrow Airport (LHR) to the hotel
- Two full days of touring, including all admissions
- Lecture by historian Jonathan Boff, PhD
- 3 breakfasts, 2 lunches, 1 reception
- Beer, wine, and soft drinks with included lunches and reception
- Expert local guide/tour manager
- Private, first-class air-conditioned coach
- Personal listening devices on all included touring
- Gratuities to guides, drivers, porters, and servers

AERIAL VIEW OF CHARTWELL, HOME OF SIR WINSTON CHURCHILL.
COURTESY OF SKYSCAN PHOTOLIBRARY / ALAMY STOCK PHOTO.

DAY 1: ARRIVE LONDON

Arrive at London Heathrow Airport (LHR) and transfer to the 5-star Rubens at the Palace Hotel in the heart of London. This afternoon, enjoy a visit to the Guards Museum, which tells the story of over 300 years of the Foot Guards and their service in the many campaigns and theaters that shaped the modern world. Upon returning to the hotel, enjoy a champagne reception and a lecture on Winston Churchill given by historian Jonathan Boff, PhD. Relax this evening with dinner and sightseeing at your leisure. **Accommodations: Rubens at the Palace (R)**

DAY 2: CHARTWELL

Travel to Chartwell, Sir Winston Churchill's countryside manor. Pictures, books, and personal mementoes evoke the career and wide-ranging interests of this great statesman, writer, painter, and family man. Explore the hillside gardens and reflect on Churchill's love of the landscape and nature. They include the lakes he created, Lady Churchill's Rose Garden, and the playhouse built especially for his youngest daughter. After lunch on the grounds of Chartwell, return to London and enjoy an evening on your own. **Accommodations: Rubens at the Palace (B, L)**

DAY 3: IMPERIAL WAR MUSEUM AND CHURCHILL WAR ROOMS

After breakfast, tour the Churchill War Rooms, which were constructed beneath the streets of Westminster during World War II. This facility served as the underground nerve center from which Churchill and his inner circle directed the war in Europe. Enjoy a traditional lunch of fish and chips at a nearby English pub, then take a driving tour of London. Continue to the famed Imperial War Museum for an afternoon of exploration in the exhibits. Imperial War Museum-London is a place to experience the continuing influence of war on the world—an experience that is as compelling and thought-provoking as it is unforgettable. Return to the Rubens this evening for your final night in London. **Accommodations: Rubens at the Palace (B, L)**

DAY 4: JOIN THE EASY COMPANY TOUR

Enjoy breakfast at the Rubens then transfer to meet the main tour group. **(B)**

5-STAR ACCOMMODATIONS

Rubens at the Palace Hotel, London

The luxurious Rubens at the Palace Hotel overlooks Buckingham Palace and lies within easy walking distance to Victoria Station. This historic hotel is fully renovated and offers a host of restaurants and bars. The beautifully appointed guest rooms are elegantly furnished with meticulous attention to detail and personal thoughtful touches. Traditional style blends seamlessly with the latest modern amenities, including complimentary Wi-Fi, an entertainment system with interactive TV, a huge selection of on-demand movies, and a music library.





Stunning Accomodations

Our educational travel programs allow you to experience your journey in quaint regional boutique hotels as you go behind the scenes to the beaches, bridges, cities, and villages where crucial battles took place.*

DONNINGTON VALLEY HOTEL & SPA

-NEWBURY, UK-

Situated in the heart of the Berkshire countryside just outside of Newbury, Donnington Valley Hotel & Spa is a privately owned country hotel. Designed for work, relaxation, and play, the hotel boasts a 2 AA Rosette restaurant, state-of-the-art spa and health club, and a stunning 18-hole golf course. All of the 111 bedrooms and suites are elegantly designed with marble bathrooms, flat-screen TVs, a selection of films to choose from, and complimentary Wi-Fi. Bedrooms include Egyptian cotton duvets, laptop-sized safes, and complimentary bottled water.

**Please note: Due to the average climates in many of the locations visited and the historic nature of the properties utilized, air conditioning may not be available at certain hotels. Hotel accommodations are subject to change and final hotel selections will be communicated one month prior to departure.*



Stunning Accomodations

HOTEL LE LION D'OR

-BAYEUX, FRANCE-

Le Lion d'Or is a quaint 4-star boutique hotel, ideally located in the center of medieval Bayeux and perfectly nestled among the D-Day landing beaches. With just 31 guestrooms, Le Lion d'Or exudes a warm and cozy atmosphere, offering a full and hearty breakfast each morning, a historic lounge bar, and a gourmet restaurant. It was here that famed WWII correspondents such as Ernest Hemingway and Ernie Pyle celebrated the successes and mourned the devastating losses of D-Day in June 1944.





Stunning Accomodations

THE PULLMAN HOTEL

- EINDHOVEN, THE NETHERLANDS -

This beautiful 4-star hotel is located in the charming heart of Eindhoven just opposite the luxury De Heuvel shopping center. The Pullman Eindhoven Cocagne is well-known for their Vestdijk 47 restaurant & bar. Rooms are spacious and include complimentary Wi-Fi, minibar, high-definition television, in-room safe, and room service.



Stunning Accomodations



CHATEAU D'URSPALT

- CLERVAUX, LUXEMBOURG -

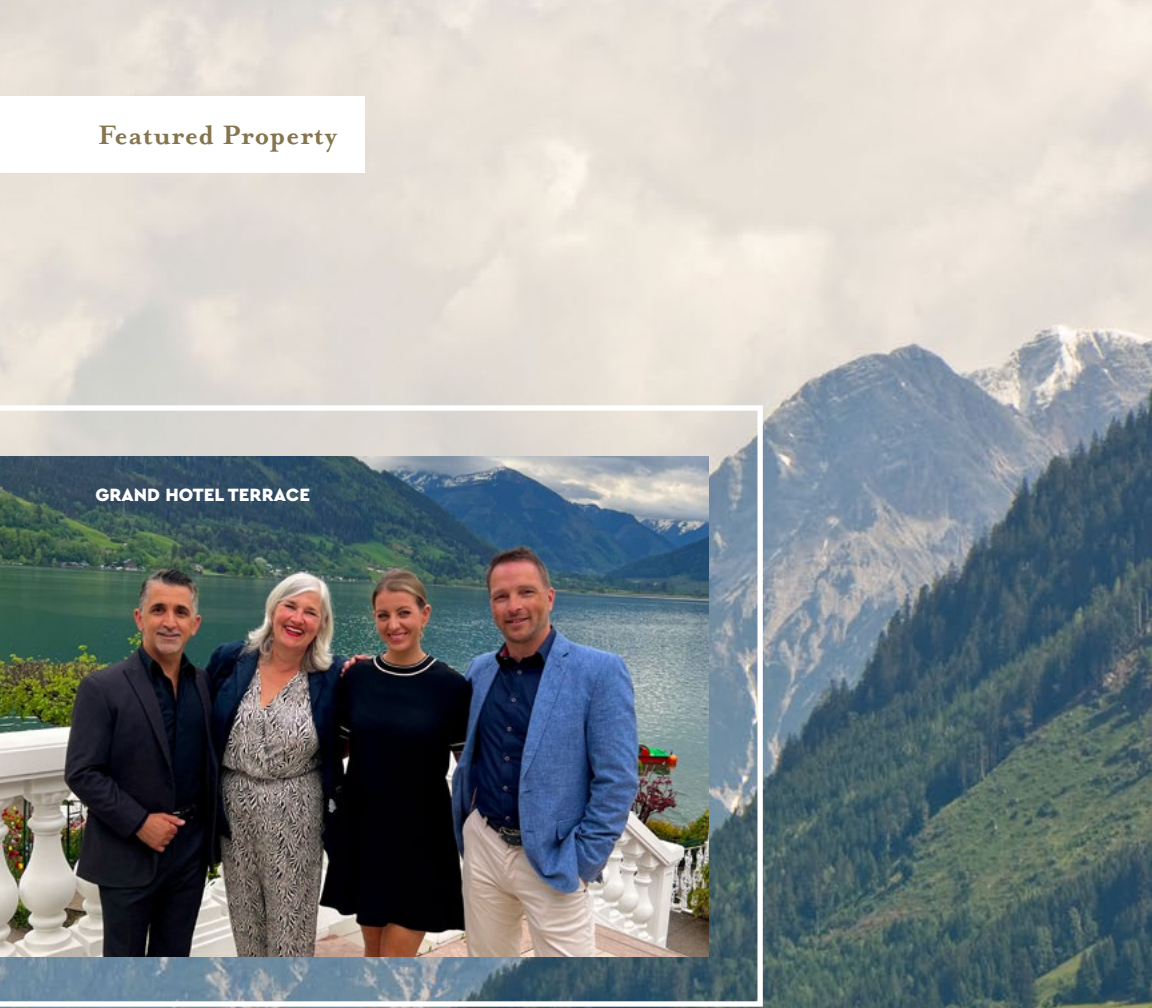
Completely restored in 2008 after decades of neglect, Chateau d'Ursfelt is an 18th-century castle turned boutique hotel near Clervaux, Luxembourg. During the Battle of the Bulge, the castle was turned into a command post and field hospital. Today, her 57 rooms and suites are beautifully decorated, offering all the comfort and amenities one would expect from a 4-star property including Wi-Fi, coffee and tea making facilities, hair dryer, bath products, smart TV, and more.

MARITIM HOTEL STUTTGART

- STUTTGART, GERMANY -

This beautiful hotel located right next to Hoppenlau Park showcases three restaurants, a café, piano bar, and an exclusive wellness area with swimming pool, fitness area, and beauty lounge. Guests enjoy seasonal and regional delicacies at the Reuchlin Restaurant, discover the popular Swabian "Maultasched" (filled pasta) at Café Espresso, and imbibe in a generous selection of cocktails in the Pianobar. Recently renovated in 2016, each room boasts a modern bathroom design including a rain shower with digital temperature settings.

Featured Property



GRAND HOTEL TERRACE



GRAND HOTEL EXTERIOR

Featured Property



GRAND HOTEL DINING

GRAND HOTEL

-ZELL AM SEE, AUSTRIA-

At the end of the war, Grand Hotel Zell Am See was occupied by US forces for 10 years and is best known as the hotel where the Band of Brothers spent time. Today, it is the perfect end to a pilgrimage honoring Easy Company. This superior 4-star hotel is located in a unique location on a private peninsula directly on the shore of Lake Zell. In existence for more than 120 years, it provides the highest level of *Gemütlichkeit*, or regional hospitality, to our guests. A farewell dinner at this breathtaking property provides an excellent end to your tour.

GRAND HOTEL OUTDOOR LOUNGE



"We have been on multiple of the WWII Museum educational travel programs. They are all well run historical tours that take you places you may not know about, as well as places not open to the general public."

- Gary K. Mont Belvieu TX

"Travelling with the WWII Museum on the Easy Company: England to the Eagle's Nest tour was a Bucket List dream for me and worth every single dollar! As a history teacher, I knew I wanted to have the best opportunity for learning, travel, & sightseeing, and this experience surpassed my expectations. We stayed in beautiful hotels, heard from expert battlefield historians who could answer even the most random questions, and the staff from the Museum ensured we had a dream trip. If you are at all interested in World War II and want the best travel experience, travelling with the WWII Museum is absolutely the right choice."

- Cathy C. Austin, TX

"My husband and I took the WWII Museum Easy Company 7-country trip in June 2023. It was life changing. We still reflect on it often. BEST tour ever in decades of worldwide travels due to its superb organization: seamless transfers, memorable sites, expert narration and guides, featured speakers, tour managers, great hotels/meals, and comfort level."

- Goldie and Mary R. Myrtle Beach, SC

"The National WWII Museum is a national treasure, putting the history of the war and society into clear focus. The Travel Dept of the Museum magnifies that effort, by making it personal. Walking in the steps of those men and women and seeing what they saw, makes for an indelible experience. The historians and guides who accompany you on each trip are a critical part of the experience, bringing so many stories to life so vividly, and make you truly feel at one with those heroes that went before you.

Add to that the professionalism of the organizers and the management of the tours, the accommodations and meals, and seamless transportation experiences, make for a thoroughly memorable experience that will not be forgotten.

I cannot recommend highly enough."

- Will O. Miami, FL



**The National WWII Museum Travel
945 Magazine Street, New Orleans, LA 70130**

**Call: 1-877-813-3329 x 257 • Visit: ww2museumtours.org
Email: travel@nationalww2museum.org**